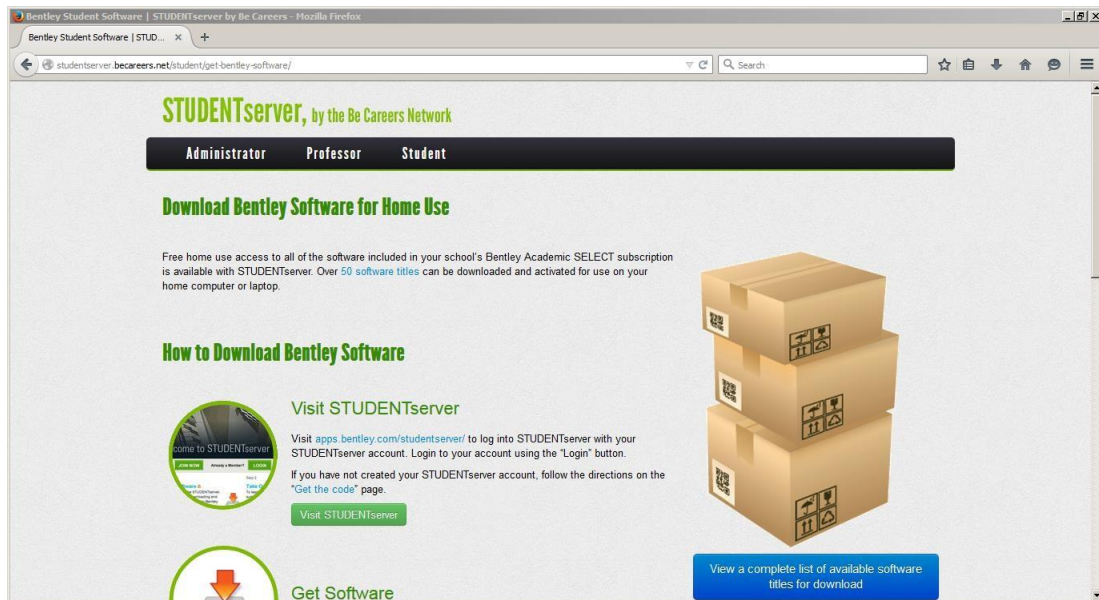


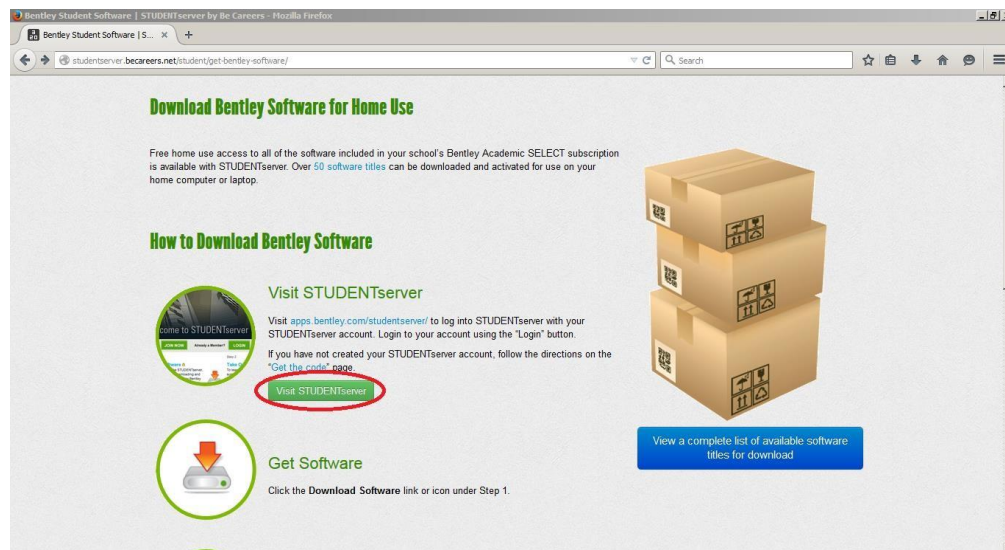
One Minute Guides – Bentley Software Download

URL: <http://apps.bentley.com/studentserver/home/>

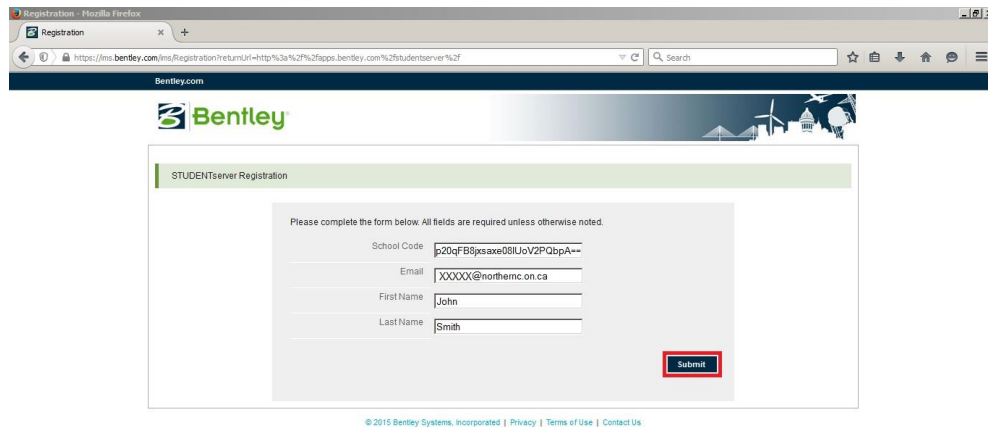
1. Open your web browser. Go to the [Bentley web site](http://apps.bentley.com/studentserver/home/).



2. Click the green “Visit STUDENTserver” button.



3. Once there click the green “JOIN NOW” button.



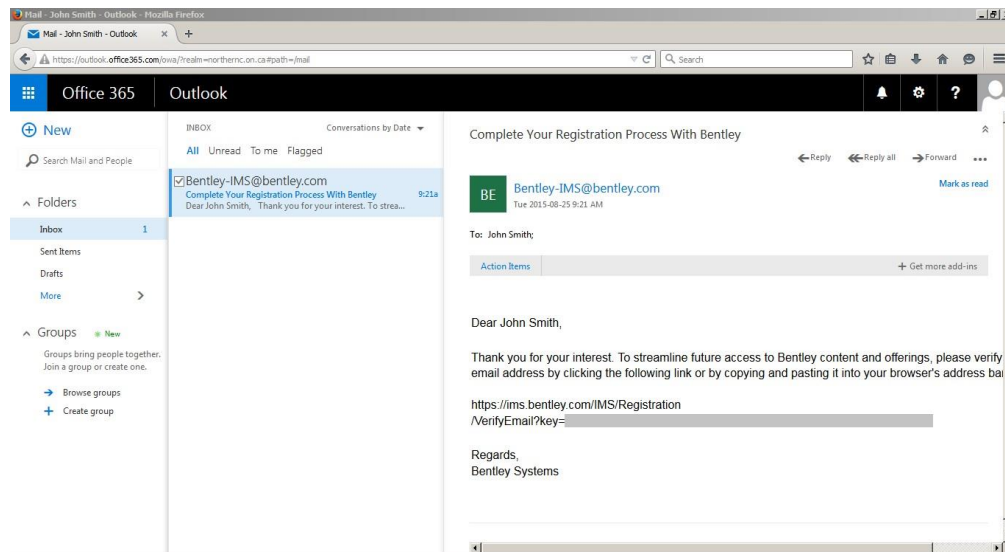
4. Once at the above page, enter your School Code, Email Address, First Name, and Last Name. Your School Code is: Please see your IT department for your school code.
5. Once complete, click Submit.

Email Validation

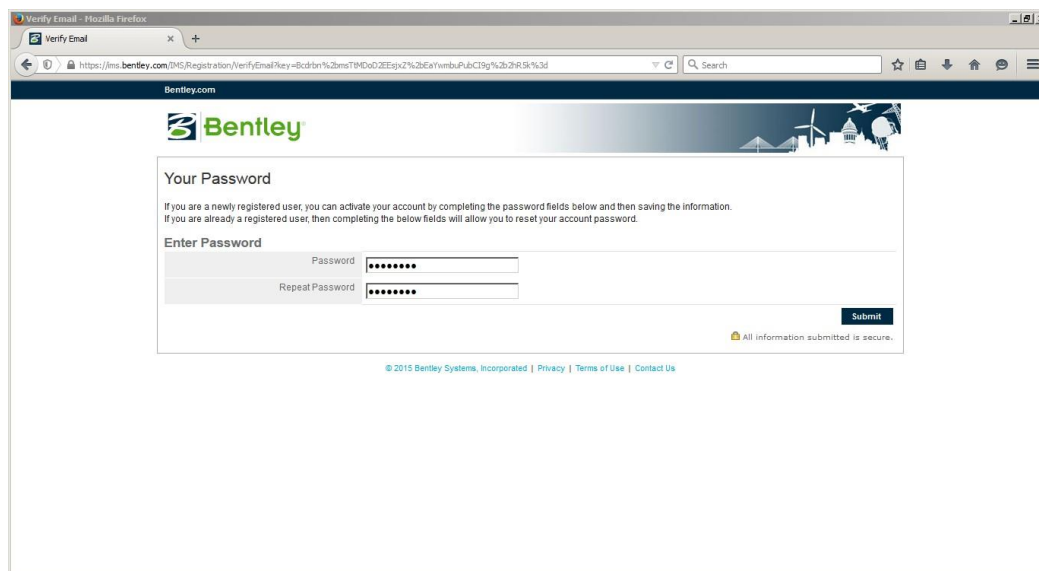


Thank you for your registration with Bentley Systems. We have sent you an email with a link to activate your account. Please check your email for further details.

6. Once you've submitted the information on that page, go to your student email.

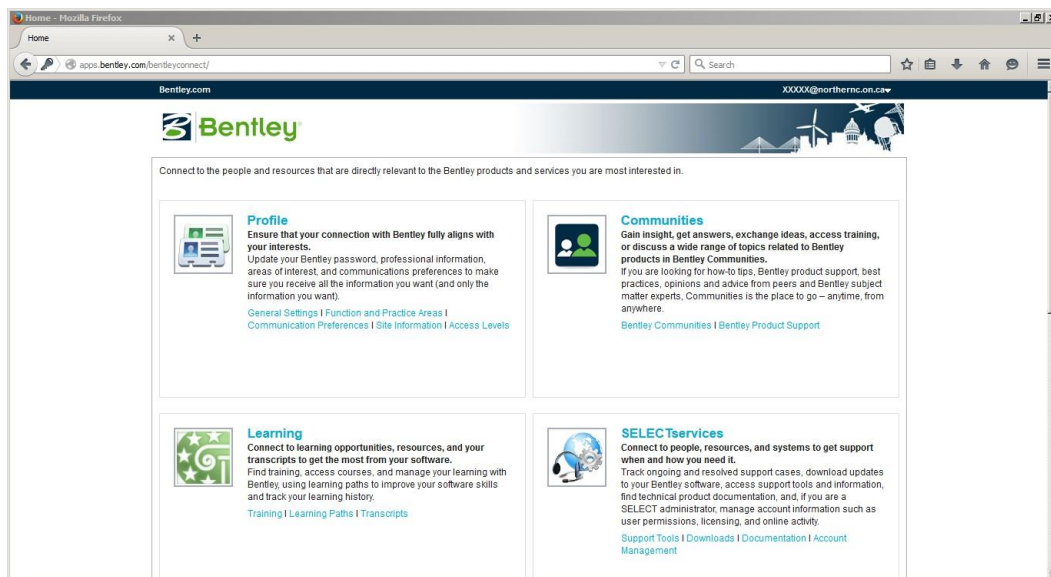
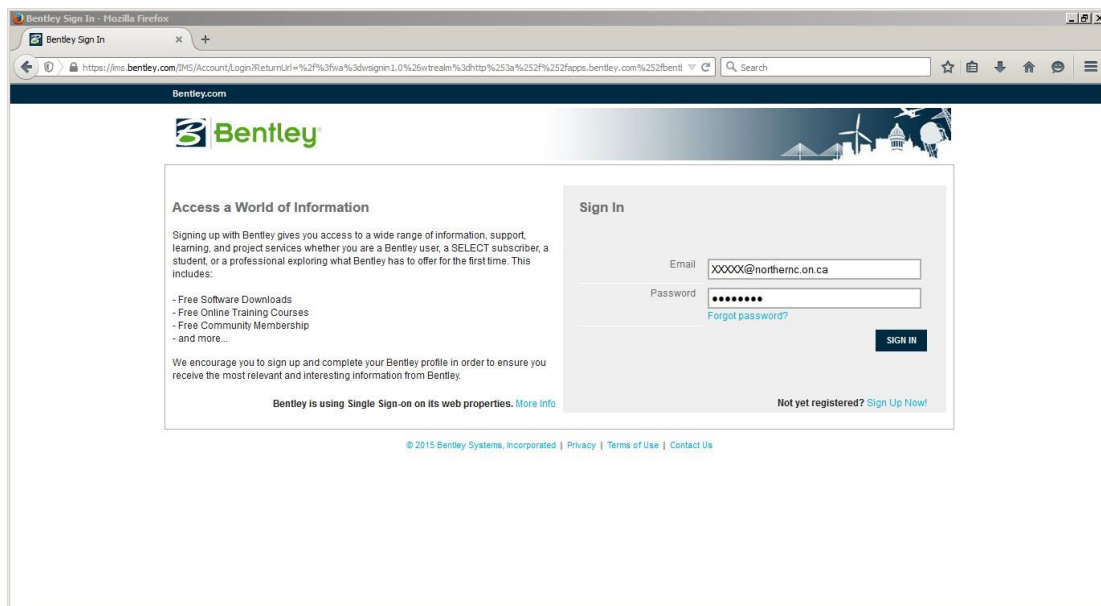


7. Copy the link from your email into your browser's address bar and press enter. When asked, create a password and repeat your password. Passwords are case sensitive.



8. Once done, click "Submit"

9. Click the “Home” button. Then login with your student email address and password that you just created.



Once you reach this page, scroll to the bottom and click “Download Software” under “STUDENTserver”. You should see this screen. This area is where you download all of the applications you will need for your program. Scroll down to find the application you wish to download and click the “All Downloads” button.

Once you have clicked “All Downloads,” click the green download button to the right of the software you wish to download.

“But which software DO I want to install?”

Well, the official list of software you need to download and install onto your computer is:

- Bentley StormCAD
- Bentley WaterCAD
- Bentley WaterGEMS
- Bentley CivilStorm
- Bentley CulvertMaster
- Bentley FlowMaster
- Bentley HAMMER
- InRoads Suite
- MicroStation
- Bentley PondPack
- Bentley SewerCAD
- Bentley SewerGEMS

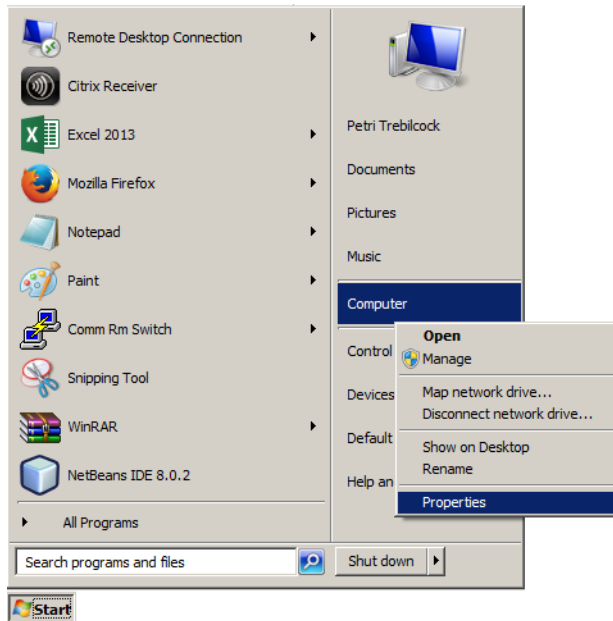
Some software comes in different versions for different computer architectures.

HOW TO FIND OUT WHICH COMPUTER ARCHITECTURE YOU HAVE

If you already know whether you have a 32-bit architecture or 64-bit architecture, please skip to STEP 12

In Windows 7

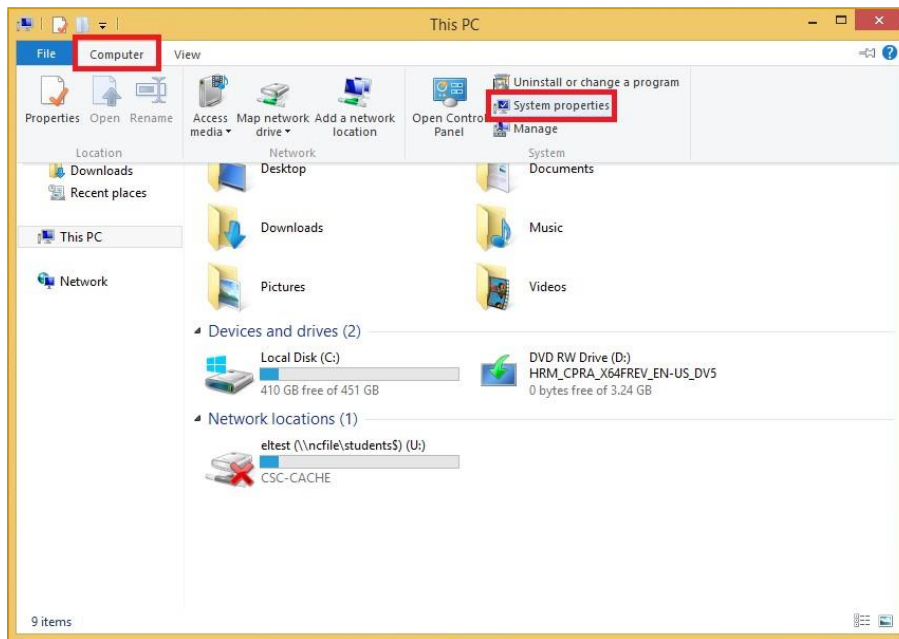
Click Start > Right Click “Computer” and click “Properties”



Your PC's architecture is located under “System type,” in this case it is a 64-bit computer.

In Windows 8/8.1

On your keyboard, press  (Windows Key) and 'E' together to bring up "This PC".

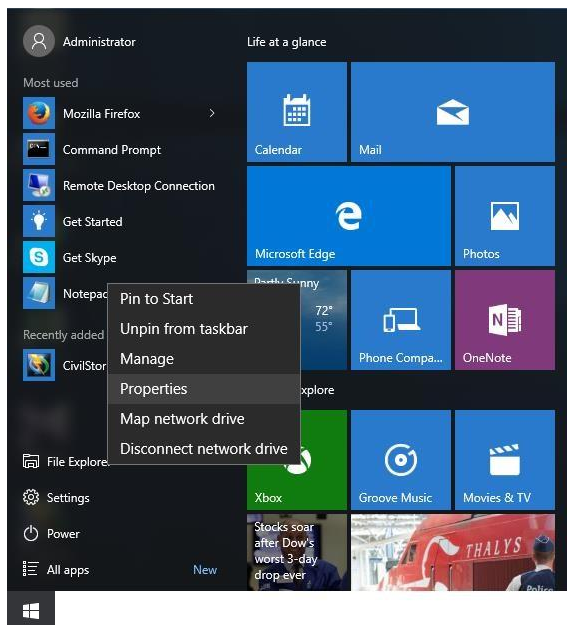


Click "Computer" then "System properties".

Your PC's architecture is located under "System type," in this case it is a 64-bit computer.

In Windows 10

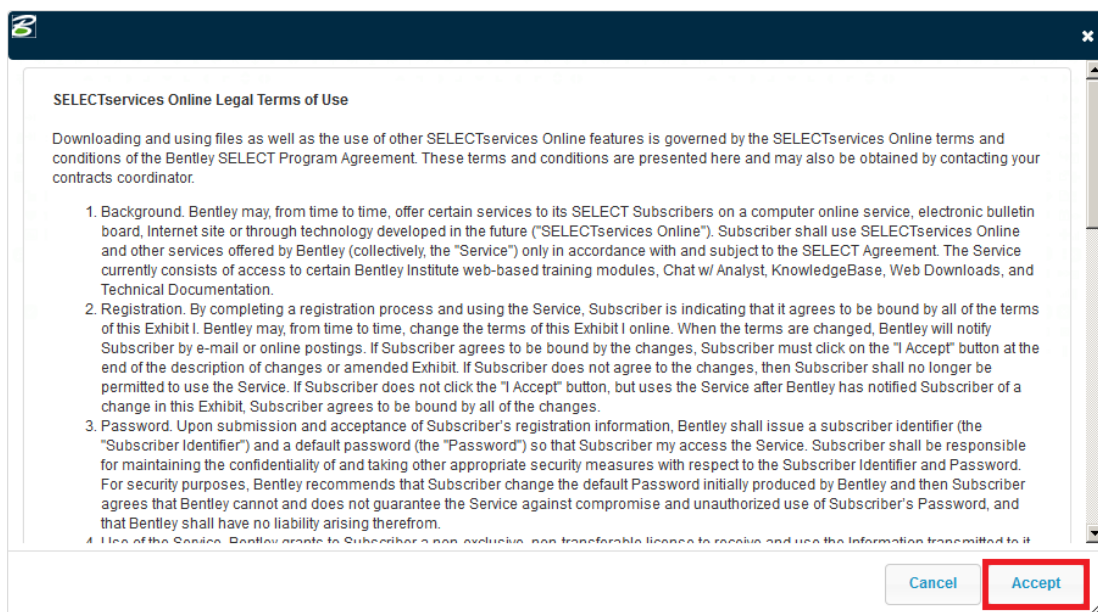
Click the Start Button > Right Click “File Explorer” > Click “Properties”



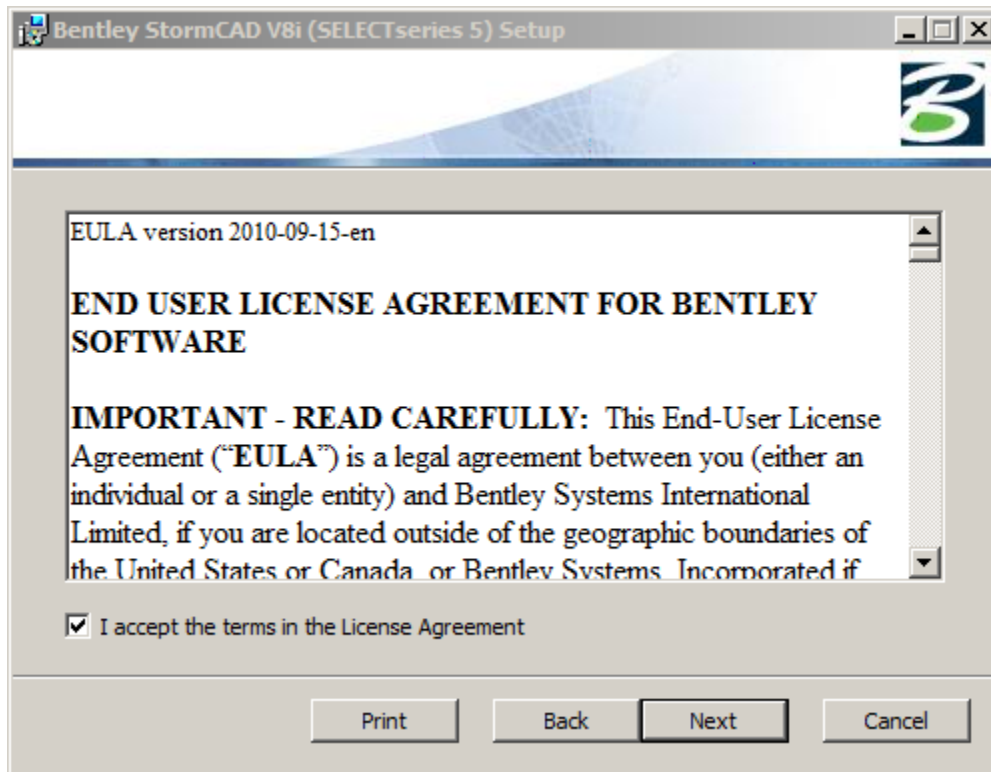
Your PC's architecture is located under “System type,” in this case it is a 64-bit computer.

Once you know your PC's architecture, you can download the file you want. The file will tell you what architecture is required for it.

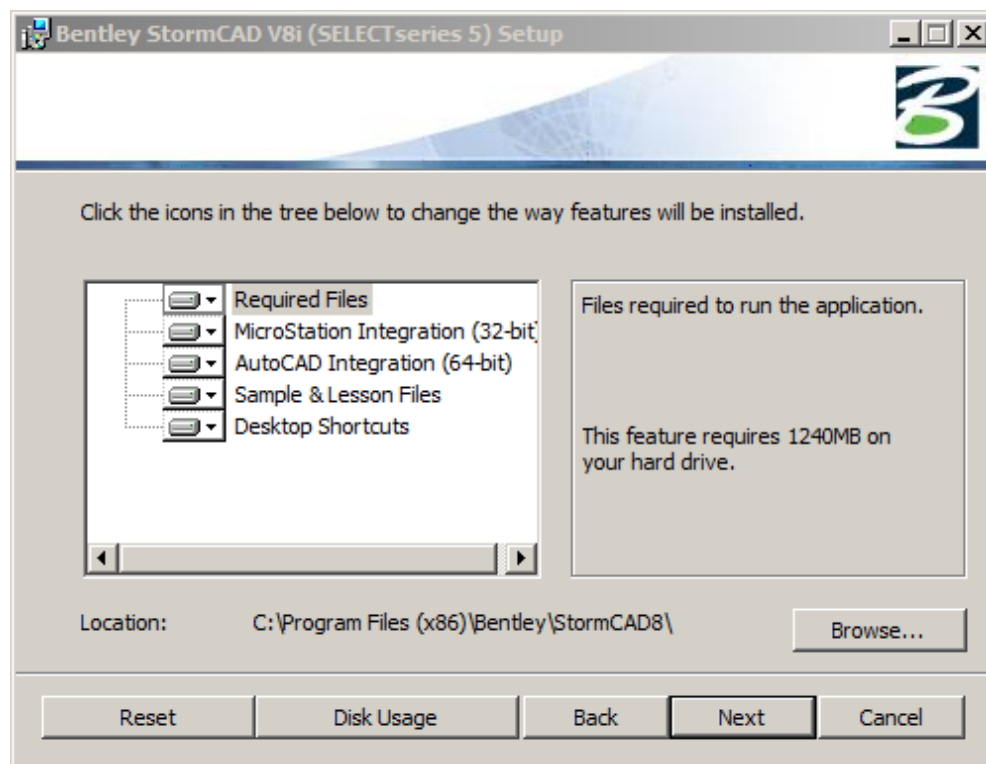
If you are running a 32-bit Operating System you require x86 applications. If you are running a 64-bit Operating System you can use x64 or x86 applications.



Read and Accept the Terms of Use. Finally, save the installation package. Finally, run the installation package by opening the file.



Select the features you need installed and click next.



Click install. After installation, you will be finished with set up.

