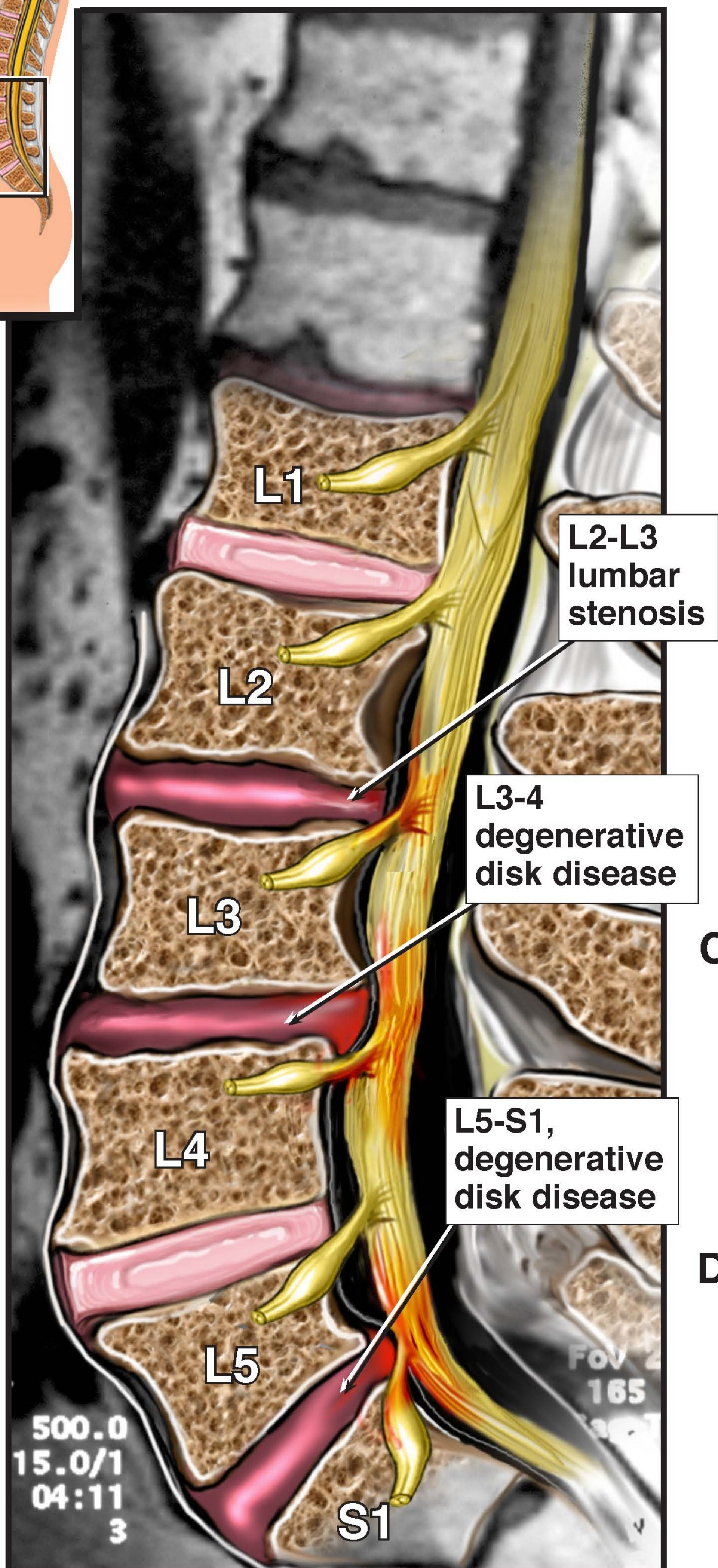


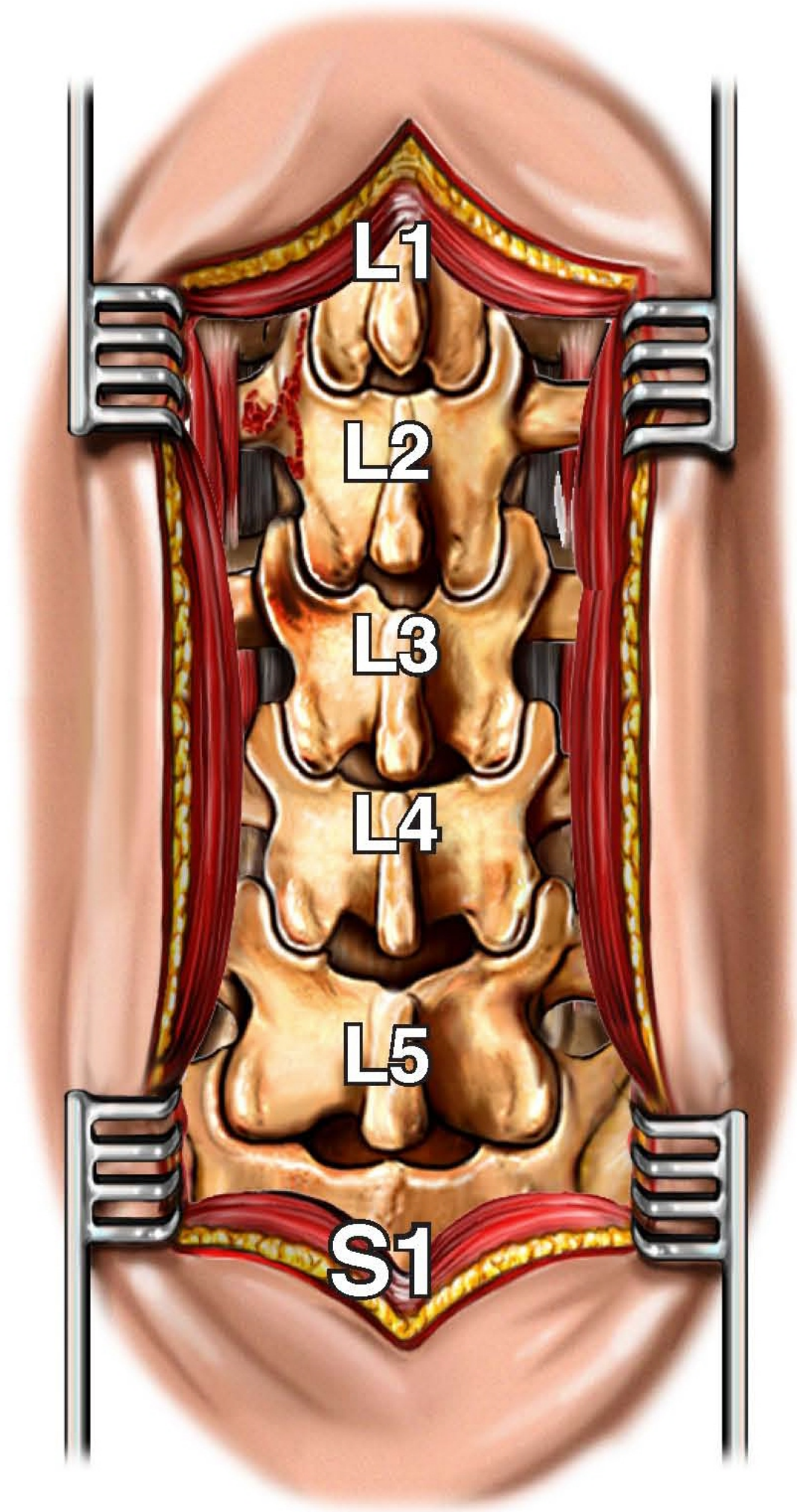
Pre-operative Condition  
MRI:1/09/01



Sagittal view

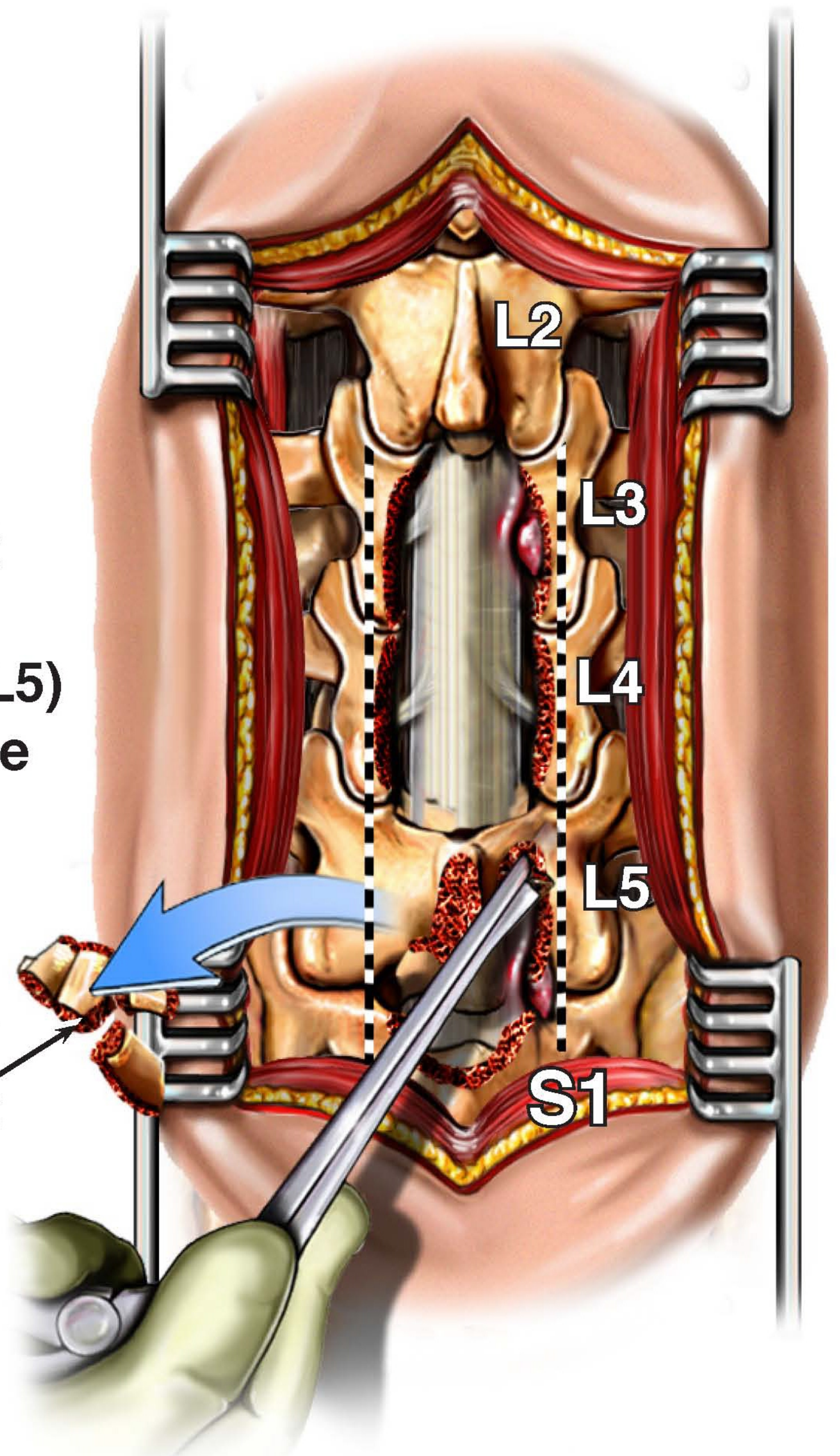


**A. An incision is made from the spinous process of L1 down to S1.**



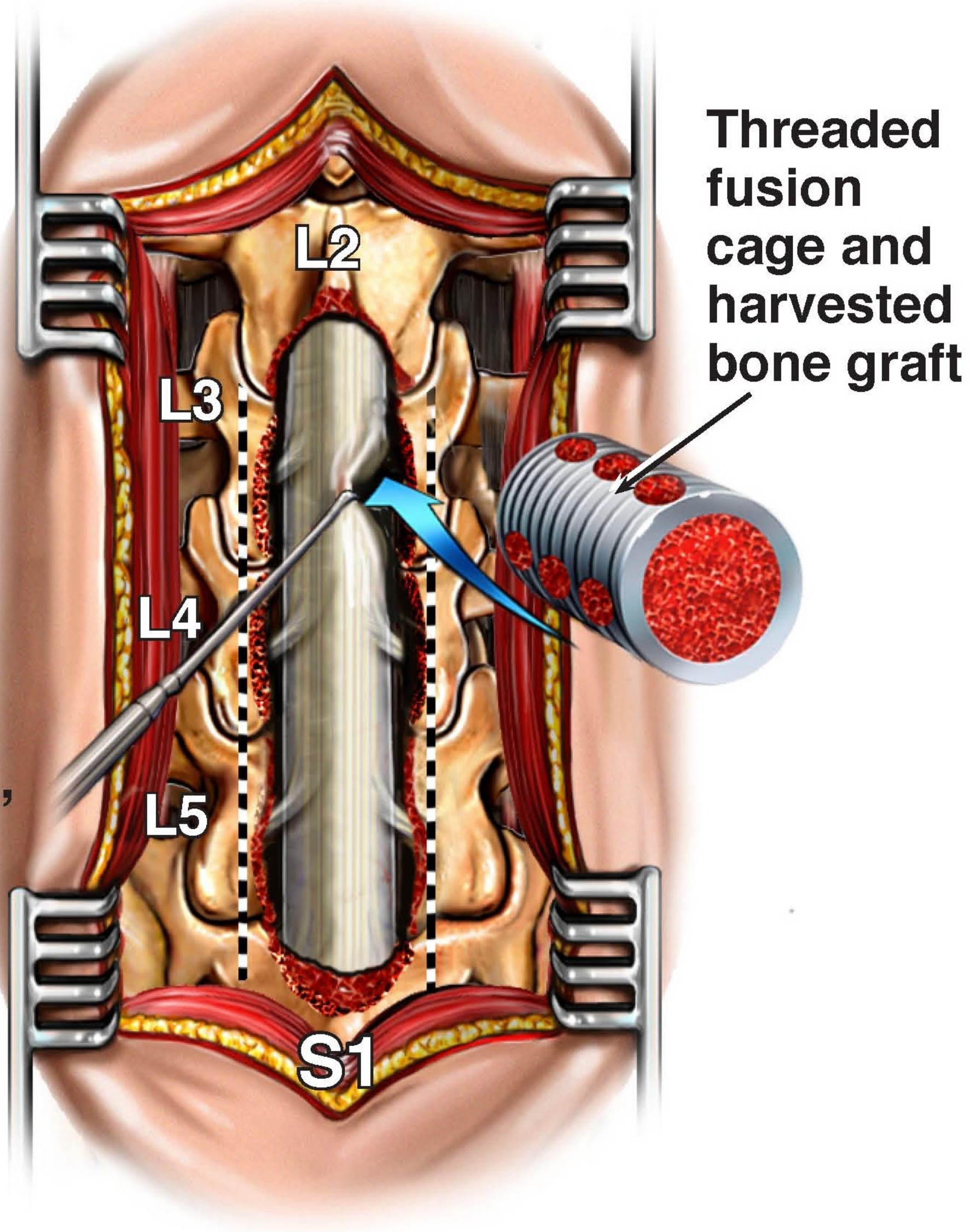
**B. Rongeurs are used to harvest the spinous processes (L3-L5) to be used in the lumbar fusion.**

**Harvested bone graft**



**C.** A laminectomy is also performed at level L2-3.

**D.** After decompressing the spinal cord, fusion cages are inserted at levels L5-S1 and L3-4.



# L3-4 and L5-S1 Interbody Fusion

